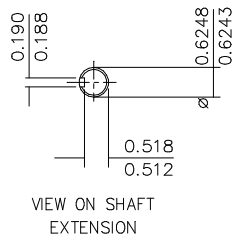
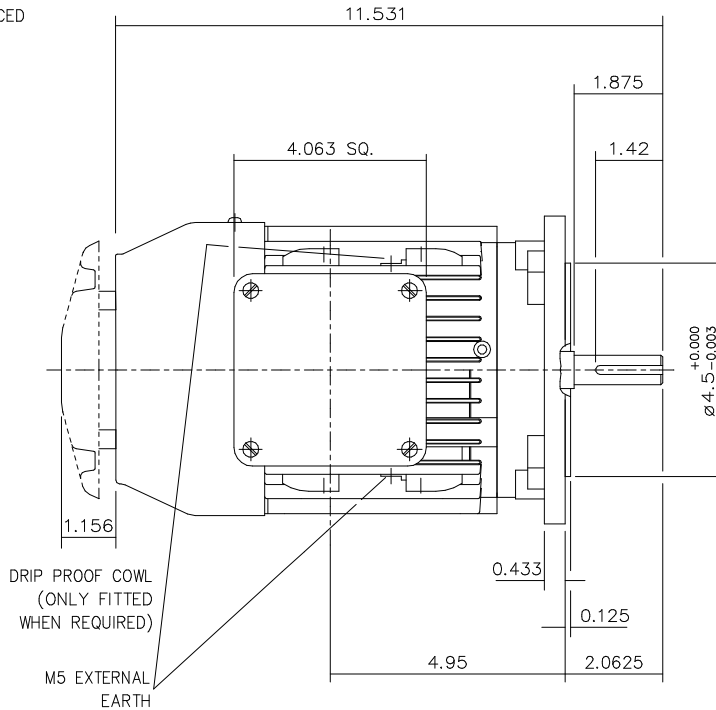
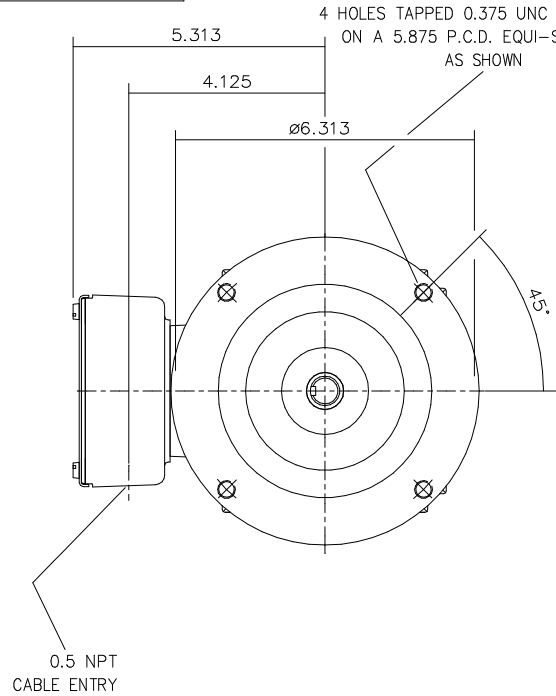


DRG. No. W56GE006/0

DRG. REF.

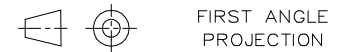


DRIP PROOF COWL (ONLY FITTED WHEN REQUIRED)

M5 EXTERNAL EARTH

CUSTOMER		
ORDER No.		
PART No.		
OUR ORDER No.		
FRAME SIZE		
KW.	RPM.	
Hz	PHASE	
VOLTS	POLES	
BRGS.	DE.	NDE.
MOTOR NETT WT.	Kg.	
SPECIAL REMARKS		

ALL DIMENSIONS IN INCHES.



**BROOK CROMPTON**

Huddersfield, HD1 3LJ ENGLAND

TERMINAL BOX POSITION: - CAN BE ARRANGED AT EITHER 9,12 OR 3 O'CLOCK  
 STANDARD TERMINAL BOX POSITION IS 9 O'CLOCK AS SHOWN  
 CONDUIT ENTRIES: - TERMINAL BOX CAN BE ROTATED AT 90° INTERVALS  
 (CONDUIT ENTRY POSITION SHOWN FOR ILLUSTRATION ONLY)  
 NOTE: CARE SHOULD BE TAKEN TO ENSURE THAT SCREWS OR STUDS DO NOT  
 EXTEND INSIDE THE MOTOR BEYOND THE DEPTH OF THE THREAD FIXING HOLE

SHEET SIZE

A3

TITLE  
OUTLINE DIMENSION DRAWING ALUMINIUM TOTALLY ENCLOSED FAN COOLED  
2-DA56 FRAME 'C' FACE MOUNTED MOTOR

NAME	DATE
VLS	23-08-02
CHECKED	RR
SCALE	1: 2.5

DRG. No.	W56GE006/0
DRG. REF.	
REVISION:	DATE